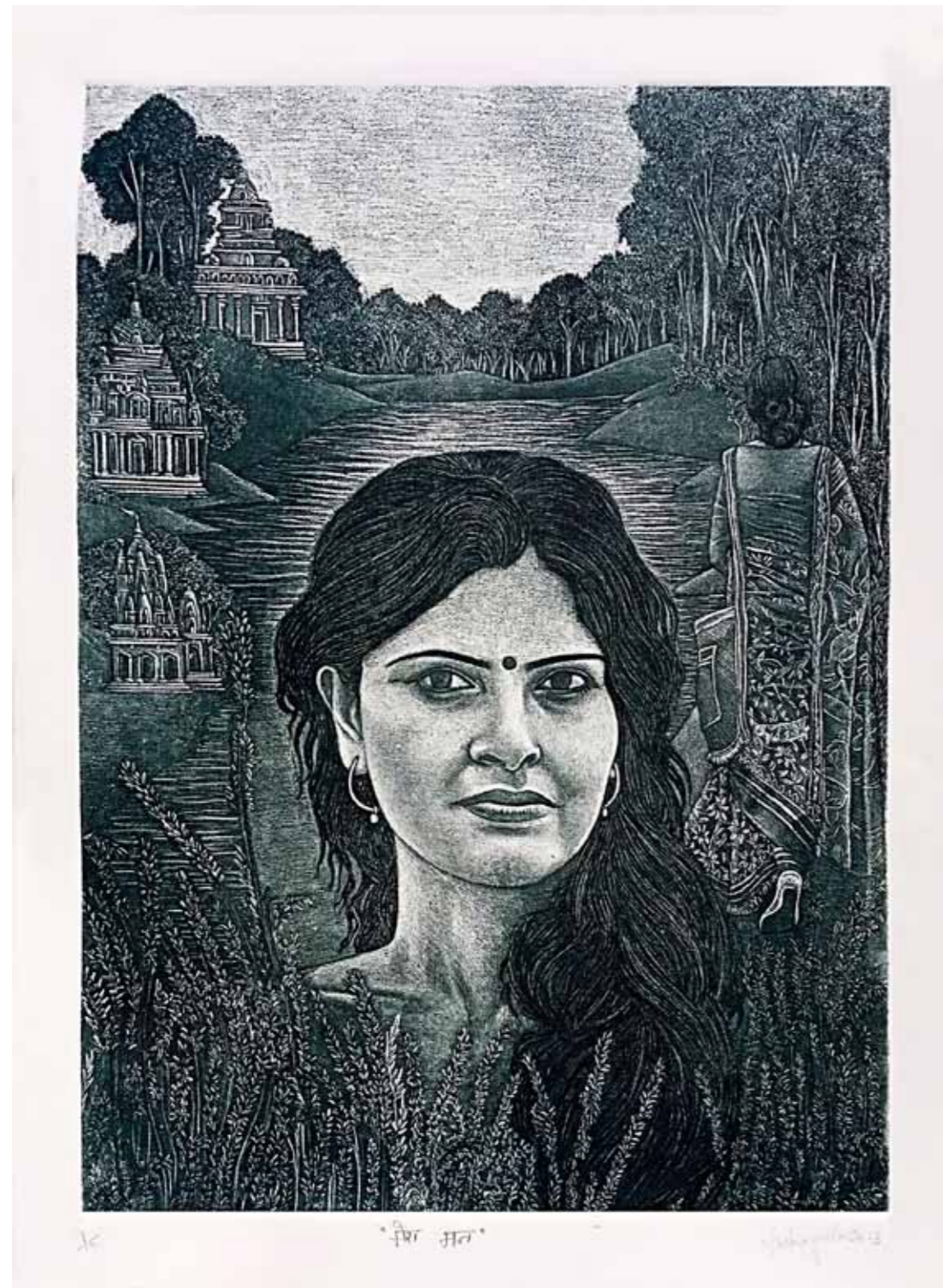


**MILES AHEAD...  
AND MORE TO TRAVEL**



A solo show by  
**Dr SUSHMA YADAV**

**CURATED BY JYOTI A. KATHPALIA**



Cover Image: **My Life is About Art**, 39 x 19 inches, Etching, Ed. 2/12, 2022  
Inside Cover Image: **Mera Mann**, 27 x 19 inches, Etching, Ed. 1/12, 2023  
Back Cover Image: **Secret Stories**, 39 x 21.5 inches, Etching, Ed. 2/15, 2022



Presents

## MILES AHEAD... AND MORE TO TRAVEL

A solo show by  
**Dr SUSHMA YADAV**

Curated by **Jyoti A. Kathpalia**



**01 - 10 March, 2023**  
Visual Arts Gallery  
India Habitat Centre, New Delhi

**14 - 31 March, 2023**  
Art Konsult  
#1, Basement, Hauz Khas Village,  
New Delhi-110016

[www.artkonsult.com](http://www.artkonsult.com)



## CURATORIAL NOTE

Dr Sushma Yadav's solo exhibition of etchings is a pictorial journey of a woman artist as she traverses emotional and physical realms, between the crowds and the self, with each milestone, each etching, evocatively rife with artistic achievement and telling the story of humanity through the imaginative lens of a woman.

Dr Sushma Yadav is a highly accomplished printmaker. The eminent, veteran printmaker Anupam Sud has been her mentor and guide under whose tutelage she has learnt the finer nuances of printmaking and honed her skills. It is therefore not surprising that Dr Sushma's etchings display a remarkable level of sophistication and a strong conceptual grasp of both technique and subject. The arduous and extremely meticulous technique of printmaking and etching that Dr Sushma specialises in, has required tremendous dedication and sustained efforts over a number of years. Printmaking involves incredible challenges of working with hazardous chemicals, expensive tools and materials, wastage and unpredictable outcomes. But despite these difficulties, having completed a stupendous body of work at this young age and excelling in artistic innovation and skill, Dr Sushma Yadav stands at an extremely exciting juncture in the Indian printmaking scape today.

Dr Sushma Yadav's detailed, minute and almost mathematical preplanning delicately synergises with creative, intuitive genius. The balancing and symmetry of light and dark, the highlights, and the textures, all come together to make a beautiful poetry in black and white. The idea of composition, symmetry, lines, shadow, and depth are woven in a symphony of lines and shadows. In the words of the artist, "Etching is a black and white medium and I saw everything in two parts so much so that I dream also in two tones!" One of the most distinctive and definitive accomplishments of the artist are her big etchings - works on two plates and three plates together which involves continual effort on the plates together for extended periods of time so as to maintain tonal and visual agreement.

Dr Sushma Yadav enlivens and illuminates the world with her artist's eyes. The set of prints depicting journey, metonymically captures the journey of life itself as portrayed in the sheer movement, the getting on, and the waiting that characterises life. They are at one level symptomatic of the journey of life, and at a more obvious and literal level of representation they are brilliant satiric as well as real insights into the ethos of travel and urbanity. The very medium of print also lends itself to graphic commentary, a ludic play with reality as well as a starkness of vision expediated by the stylised interplay of light and darkness, of black and white. The etchings exemplify this variety and reach.

The prints on display in this show evocatively express human relationships and render universal human emotions of pain and suffering, angst, grief, contemplation, the oscillations between love and ego, between hope and despair. These emotions are then intermixed and interweaved with diverse people. This intermingling of races and groups points toward an underlying commonality of human experience, so very important to envision today in a world that is riven by divisions and inequalities.

Dr Sushma Yadav's prints elaborate a breathtaking array of women's world as they are visualised in various facets - as temptresses, as travellers, as women inmates as they stare with blank eyes devoid of hope or joy, or as women in their daily household tasks. Significant in her prints is the depiction of a buffet or a meal, and also simultaneously of the kitchen where the meal is prepared. The act of dressing in finery as in the remarkably intricate and evocative tryptic "*Let me Dressup for Mine*" also has a counterpoint in the etchings which look behind the scenes to areas of washing clothes and their drying on clotheslines. These then become important signifiers of the interjection of the private realms (where women are often relegated) into the public domain. The etchings portraying women's work behind the scenes are a strong statement of a reality that exists that is oft forgotten. The easy assurance with which the lingerie of women is displayed hanging on the clotheslines, puts to the fore the hidden and the private hitherto associated with shame, and enacts an important shift as "*Sacred Story*", the title of this set of etchings indicates.

The prints stand apart and miles ahead in their sheer number and size, a feat arguably not yet accomplished in India, and also by the way they explore universal emotions and relationships with an unremitting focus on women in various aspects, ultimately projecting and unlayering the essential humanity that all races, genders, and groups share. That this essential humanity is conveyed through a crowd that has a majority of women rather than men is an invitation to see womankind too as depictive of the masses and not just mankind - a correction to the man-made language and ethos so needed in the male-dominated culture. The simultaneous experience of sensory delight as well as deep contemplation is what sets this artist printmaker apart from the rest making this set of etchings a visual feast as well as an emotional, intellectual, and gendered expression par excellence.

**Jyoti A. Kathpalia**

*Curator*

New Delhi, 2023





**Let Me Dress Up For Mine**  
 38.5 x 58.5 inches  
 Etching  
 Ed. 2/10  
 2022



**Unconditional Love Part-1**  
 39 x 38.5 inches  
 Etching  
 Ed. 1/12  
 2023





**Me and My Mentor**  
27 x 19 inches.  
Etching  
Ed. 2/15  
2020



**The Forefront**  
39 x 19 inches  
Etching  
Ed. 1/9  
2014





Loves Many Moods  
39 x 38.5 inches  
Etching  
Ed. 2/12  
2023



Stages of Motherly Glory  
38.5 x 38.5 inches  
Etching  
Ed. 1/12  
2023





**Mythological Mystique**  
39 x 39 inches  
Etching  
Ed. 1/12  
2020



**Golden Memories Part II**  
24 x 39 inches  
Etching  
Ed. 1/15  
2023





**Journey of life**  
21.5 x 39 inches  
Etching  
Ed. 2/15  
2021

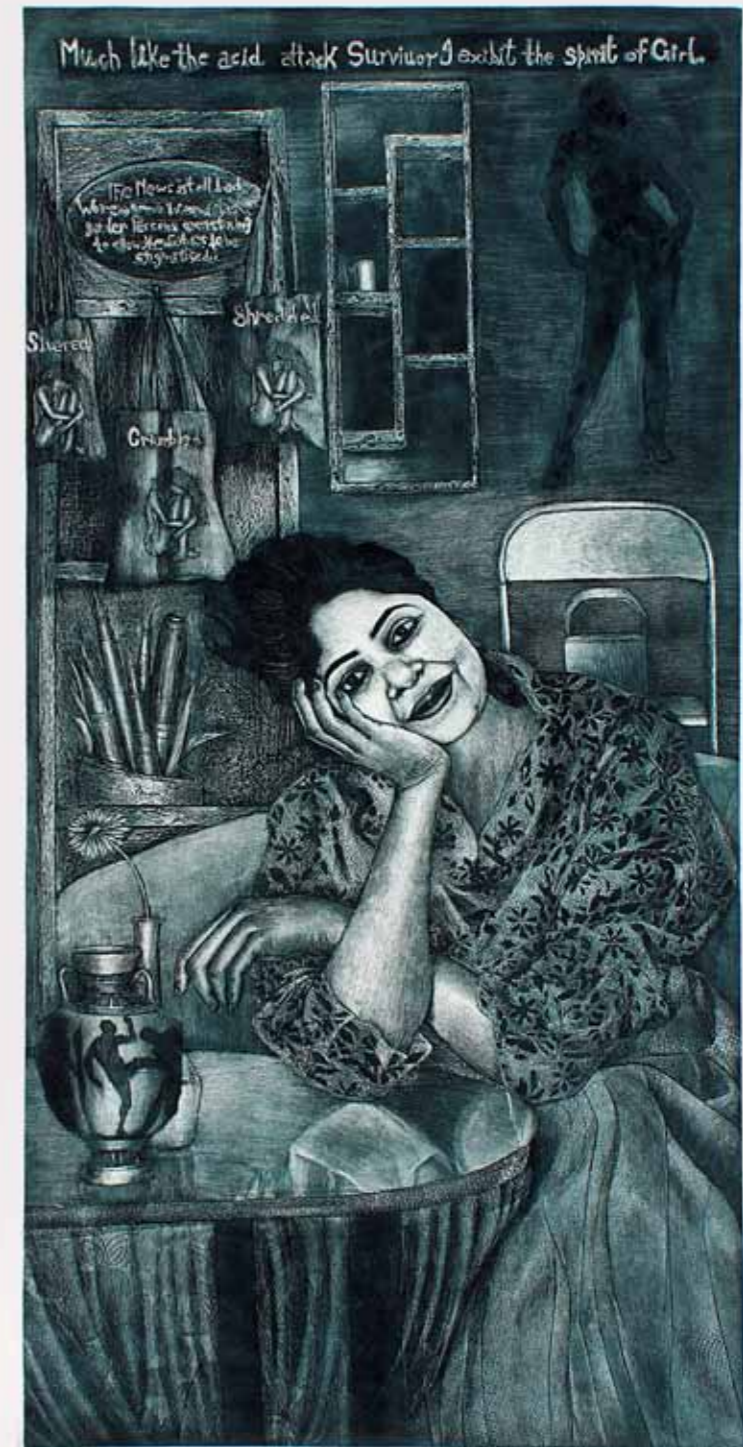


**Life in a Metro**  
21 x 39 inches  
Etching  
Ed. 2/12  
2019





**Inheritance**  
39 x 19 inches  
Etching  
Ed. 2/15  
2022



**The Survivor**  
39 x 19 inches  
Etching  
Ed. 2/12  
2019



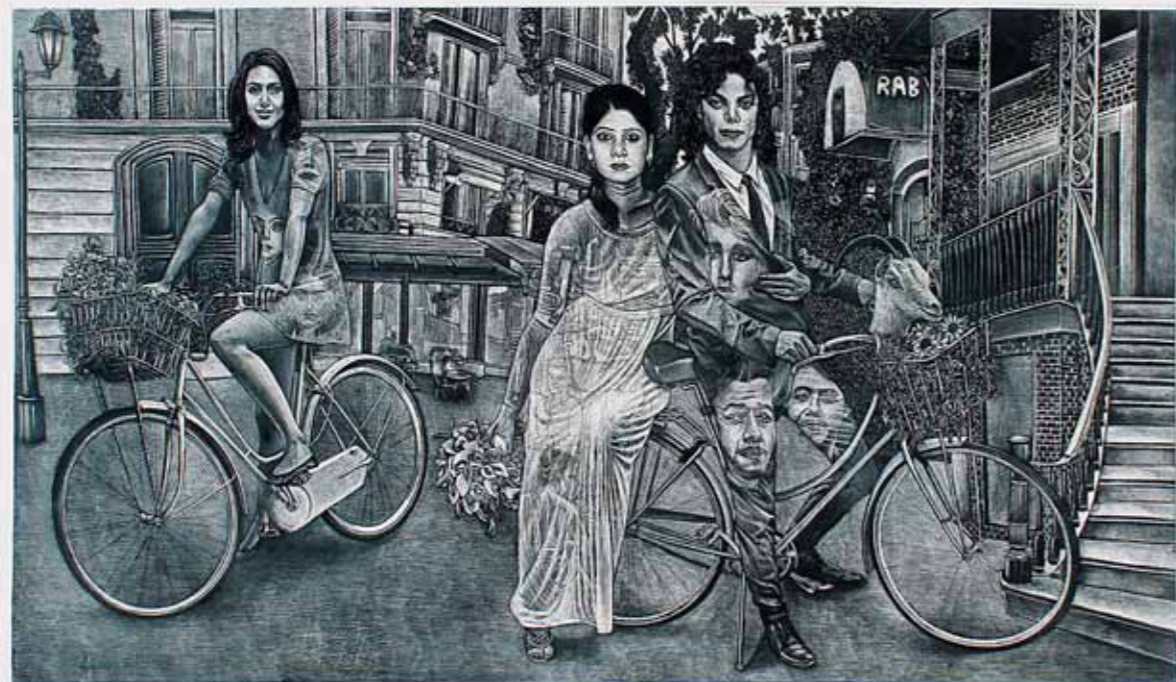


**The Proposal Part-1**  
19 x 39 inches  
Etching  
Ed. 3/15  
2020



**The Proposal Part- 2**  
21.3 x 39 inches  
Etching  
Ed. 2/12  
2022





**Cyclic Ruminations**  
21.5 x 39 inches  
Etching  
Ed. 2/12  
2022



**The Daily Route**  
21.5 x 39 inches  
Etching  
Ed. 2/12  
2022





**Deep Contemplation**  
39 x 19 Inches  
Etching  
Ed. 3/30  
2019



**Temptation of Eve**  
39 x 19 inches  
Etching  
Ed. 19/30  
2004





**Temptation of Venus**  
39 x 21 inches  
Etching  
Ed. 2/12  
2023



**Feminism Around The Tea**  
39 x 21.5 inches  
Etching  
Ed. 2/15  
2020





**Eyewitness**  
21.5 x 39 inches  
Etching  
Ed. 2/12  
2022



**Golden Memories**  
21.5 x 39 inches  
Etching  
Ed. 3/15  
2022





**Enjoying the Moments**  
24 x 39 inches  
Etching  
Ed. 1/12  
2023

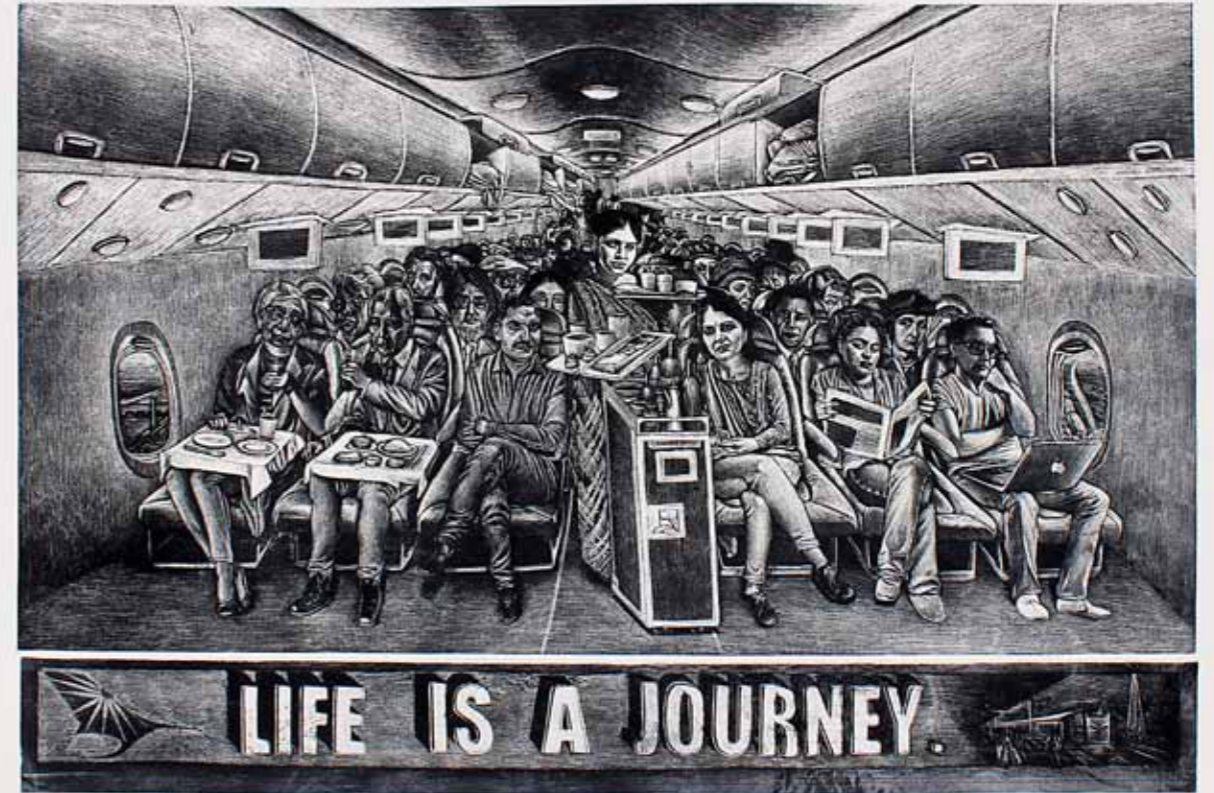


**Fleeting Moments**  
24 x 39 inches  
Etching  
Ed 1/12  
2023





**Journey of Love**  
24 x 39 inches  
Etching  
Ed. 3/12  
2022



**High Flyers**  
26 x 39 inches  
Etching  
Ed. 2/12  
2022





**Picnic**  
19 x 39 inches  
Etching  
Ed. 2/12  
2023



**Last Supper**  
19 x 39 inches  
Etching  
Ed. 3/15  
2021





**Kitchen Camaraderie**  
21.5 x 39 inches  
Etching  
Ed. 2/12  
2023

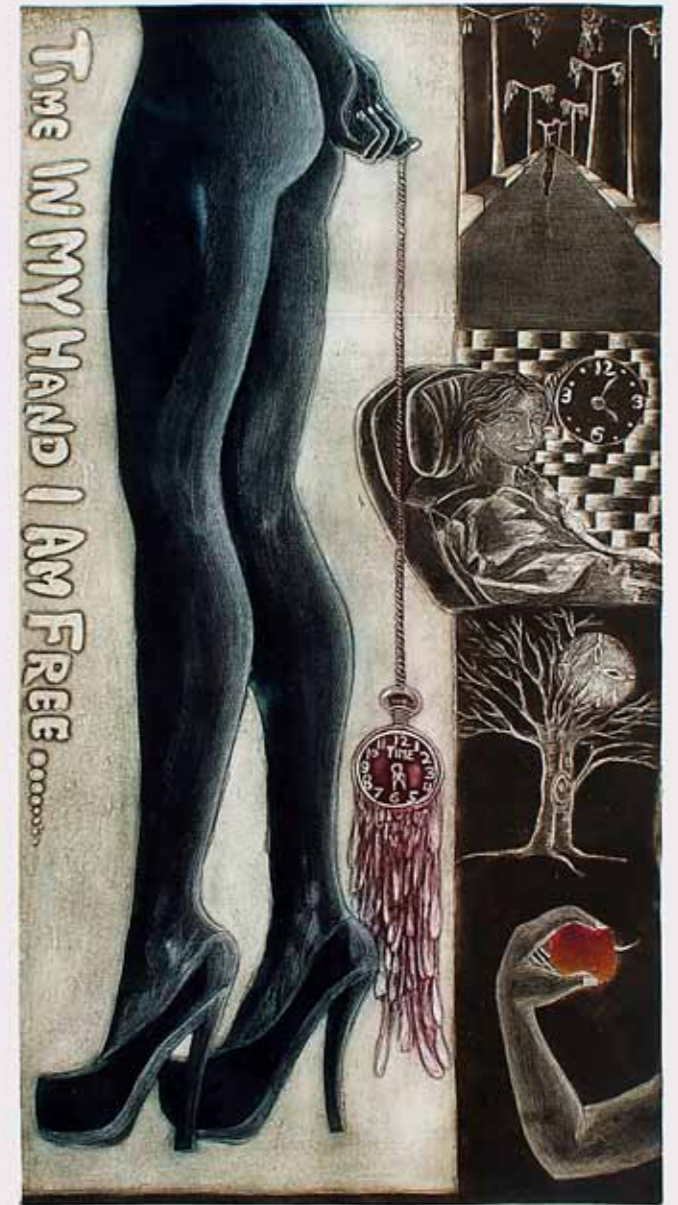


**Sacred Story Part-2**  
21.5 x 39 inches  
Etching  
Ed. 2/12  
2022





**Female Inmates Story**  
19 x 39 inches  
Etching  
Ed. 3/12  
2020



**Timing in My Hand**  
39 x 19 inches  
Etching  
Artist Proof  
2019





**Dr Sushma Yadav** (b. 1979) has a doctorate in Printmaking from College of Arts, University of Delhi in 2016. She has an MFA Graphics from Faculty of Fine Arts from Vadodara, M.S. University in 2004. She completed her BFA from College of Art, New Delhi, in 2002. She is presently working in S.C.E.R.T as Assistant Professor Art Education (DIET Moti Bagh and RK Puram). Dr Sushma Yadav is also a Fulbright fellowship holder (2005-6) and recipient Inlaks scholarship (2004-5).

Dr Sushma Yadav has participated in international group exhibitions some of which are: 2nd International Print Biennale organized by Lalit Kala Akademi at Jehangir Art Gallery, Mumbai, Print SARC Exhibition in Bangladesh, organized by Lalit Kala Akademy (2021), International group exhibition of Art organized by Indian Council for Cultural Relations (ICCR) (June 2020), International group exhibition of printmaking (Five Artist) in Athens Greece (July 2019), STREE VISION Women Print Makers Exhibition from India, Poland and Mexico (2019, 2020).

Her national participations include Group Exhibition organized by Studio Seven at Nagar Kullu (June 2022), 62nd National Art Exhibition Organized by Lalit Kala Akademi. (April 2022), Group Exhibition Organized by World University of Design and Art Konsult (March 2022), National Art Exhibition in CIMA Art Gallery, Calcutta (December 2021).

Dr Sushma Yadav's outstanding contribution in Tihar jail towards the Tihar art school startup, in initiating a diploma for jail inmates, and in Tihar Kalabhiyaan has been a tremendously therapeutic experience for inmates. Her association helped the inmates in developing and exploring their potential in creative arts thereby enacting a positive change. It has now become a movement itself, helping inmates in the process of reformation and rehabilitation.

She is the recipient of many awards - 2nd Print Biennale award - Lalit kala Akademi (2021), AIFACS Special Award in Printmaking (Graphics) in November 2019. She was awarded a Felicitation Certificate by Vice President of Delhi Women Club and President of VKS Foundation, New Delhi in August 2019. She has won the AIFACS Special Award in Printmaking (Graphics) in 2007 and the Nagpur Special State Award in Printmaking (Graphics) in 2006, best Teacher award from National Child and Women Development Charitable Trust (2006), among many others.

Dr Sushma Yadav has also received National Scholarship (H.R.D.) for two years in Graphics from Ministry of Tourism and Culture, Government of India, Shastri Bhawan, New Delhi from 2002-2004 and the State Lalit Kala National Award cum Scholarship for one year in Graphics from Ahmedabad (Gujarat), India from 2002-2003.

She has participated in many workshops, published research papers and participated in art camps nationally and internationally. She is a passionate printmaker and an avid teacher. Her works are in many collections in India and abroad - USA, Germany, Russia, Canada, Philippines, Greece and other countries.



**Lost in Art**  
39 x 19 inches  
Etching, Ed. 2/12, 2021





  
**ART KONSULT**  
ART GALLERY FOR CONTEMPORARY INDIAN ART

#1, Basement, Hauz Khas Village, New Delhi-110016  
M: +91-9899718515, Ph: 011-42460638;  
Email: [artkonsultinfo@gmail.com](mailto:artkonsultinfo@gmail.com), Web: [www.artkonsult.com](http://www.artkonsult.com)